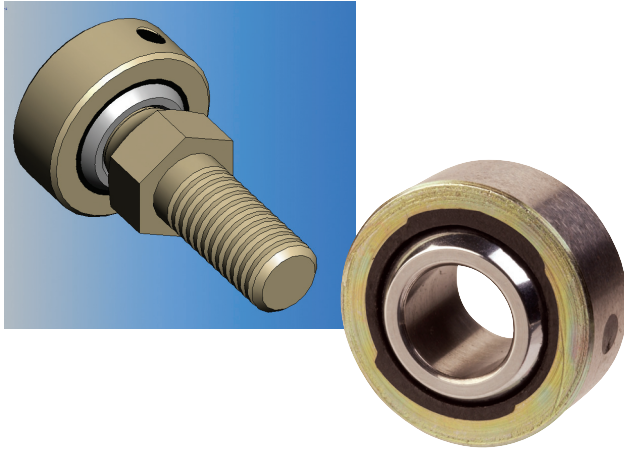


COM-P

Molded Race, Self-Lubricating,
Loader Slot Design



Spherical Bearings

Our COM-P Series is our basic precision molded race and metal reinforced offering within our line of spherical bearings. This lower cost version is suitable for a wide variety of OEM and MRO applications requiring press fit or snap ring retained bearing applications.

Our COM-P spherical bearings combine the popular fit and feel of our molded race rod ends with the strength of the loader slot design, giving COM-P enhanced strength. The plastic race of COM-P makes the bearing self-lubricating. COM-P is more economical and shows better wear characteristics and better strength than other standard plastic race bearings. The ball is loaded into the key slot and held in by both the fiberglass reinforced nylon and the metal housing. Unlike standard spherical bearings, our COM-P housing design can be plated on all surfaces for extra corrosion resistance and requires no machining after assembly.

The COM-P is just one of the many products found in our broad range of spherical bearings. For full product line detail, contact us for a comprehensive catalog or visit www.cablecraft.com and download product data sheets and other product information.



Description:

COM-P Spherical Bearings
Molded Race, Self-Lubricating,
Loader Slot Design

Applications:

- Industrial equipment
- Construction equipment
- Racing
- Lawn & garden
- Agriculture

Features:

- Combines plastic and steel for enhanced strength, provides stronger radial and axial load capacity than standard molded race products
- Plastic molded raceway delivers self-lubricating low friction and moisture-resistant performance
- Excellent wear resistance
- Design allows for control of breakaway torque, adding to its application versatility
- Metal housing design is plated on all surfaces for extra corrosion resistance
- Can be used in a wide range of temperatures:
-30°F — 220°F
(-34°C — 104°C)

Other Related Products:

- J/JM Metric/Inch, Molded Race, Self-Lubricating

COM-P

Molded Race, Self-Lubricating,
Loader Slot Design

Material

Ball

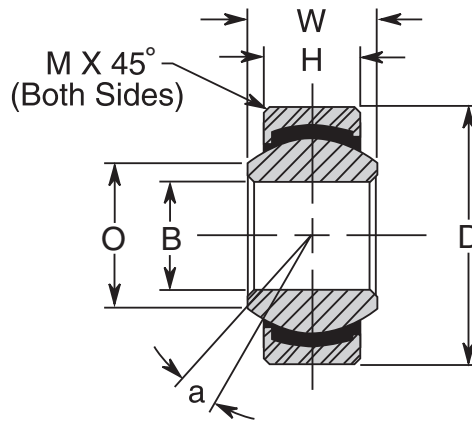
- 52100 Steel
- Rc 56 Min.
- Hard Chrome Plated

Body

- Low Carbon Steel
 - Zinc Plated, Yellow Dichromate Treated
- Body O.D. Is Ground After Plating*

Race

- Molded Self-Lubricating Reinforced Nylon



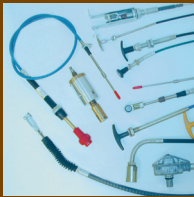
SECTION A-A

COM-P CHART

Part Number	B +.0015 -.0005	*D +.0000 -.0002	H ±.005	W ±.005	O REF	M REF	REF	a° REF	Approx. Weight (Pounds)
	Ball Bore	Outside Diameter	Race Width	Ball Width	Ball Flat Diameter	O.D. Chamfer	Ball Diameter	Misalign Angle	
COM3P	.1900	.5625	.218	.281	.293	.015	.406	11.3	.011
COM4P	.2500	.6562	.250	.343	.364	.022	.500	13.3	.018
COM5P	.3125	.7500	.281	.375	.419	.032	.562	11.8	.026
COM6P	.3750	.8125	.312	.406	.515	.032	.656	9.8	.033
COM7P	.4375	.9062	.343	.437	.530	.032	.687	9.6	.042
COM8P	.5000	1.0000	.390	.500	.600	.032	.781	9.8	.058
COM10P	.6250	1.1875	.500	.625	.739	.032	.968	9.1	.102
COM12P	.7500	1.4375	.593	.750	.920	.044	1.187	9.2	.186

* Consult Cablecraft Motion Controls sales for full plated body options. Bearing OD tolerance on plated versions (+.001/- .003)

Linking Motion
& Control...
The Cablecraft
Solution



WARNING!

Since the manufacturer is unable to determine all applications in which a part may be placed, it is the user's responsibility to determine the suitability of the part for its intended use. This is especially true where safety is a factor. Incorrect application or installation may result in property damage, bodily injury, or death. For technical assistance, call 260-749-5105.

Cablecraft®
Cablecraft Motion Controls

2110 Summit Street
New Haven, Indiana USA 46774
Tel 260 749-5105 Fax 260 749-5677

4401 South Orchard Street
Tacoma, Washington 98411 USA
Tel 253 475-1080 Fax 253 474-1623

Diplocks Way-South Road
Hailsham, East Sussex BN27 3JF, England
Tel 44 1323 841510 Fax 44 1323 845848

www.cablecraft.com