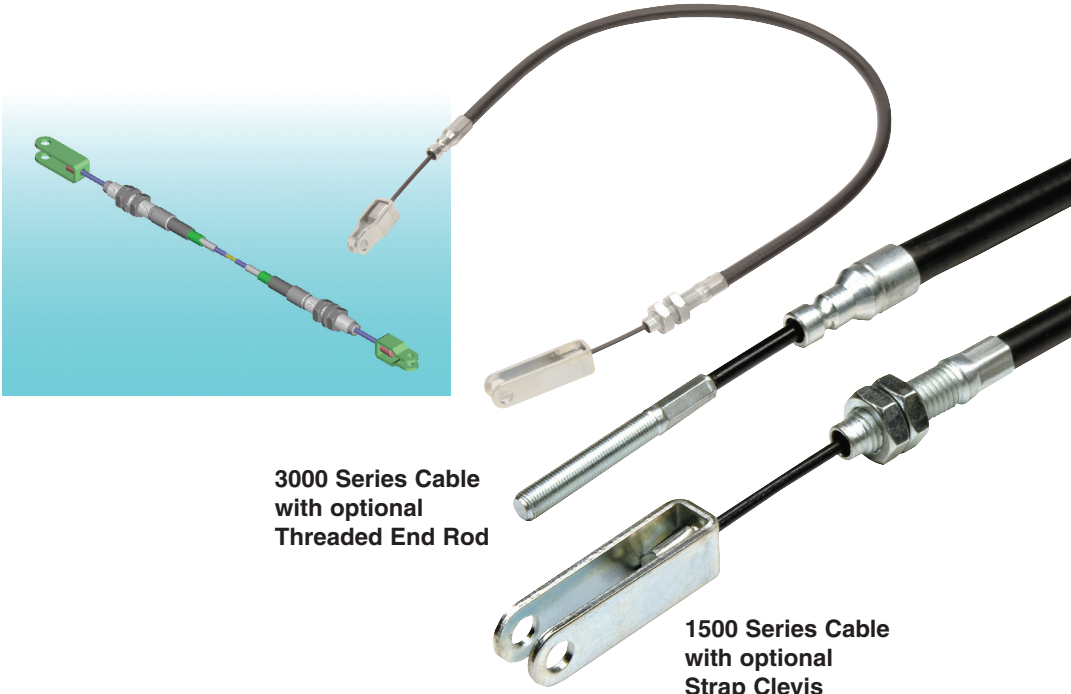


Pull-Only Brake

1500 & 3000 Control Cable Assembly



**3000 Series Cable
with optional
Threaded End Rod**

**1500 Series Cable
with optional
Strap Clevis**

Pull-Only Industrial

A flexible control designed to transmit pull motion between two mechanical devices without the use of rods, bellcranks, or other rigid mechanical linkage. Pull controls are specifically designed for applications which require a high load capability and low deflection. The cable often used for operating a vehicle parking brake is a typical example. Simple to install and easy to maintain, our versatile pull controls are found on many types of mechanical equipment.



Description:

1500 Pull-Only Brake
3000 Pull-Only Brake
Industrial Control
Cable Assembly

Applications:

- Park brakes
- Pull-pull cable systems

Features:

- High load capacity
1500 allows up to
1500lb loads
- Low deflection
3000 allows up to
3000lb loads
- Installed bend radius
down to 5"

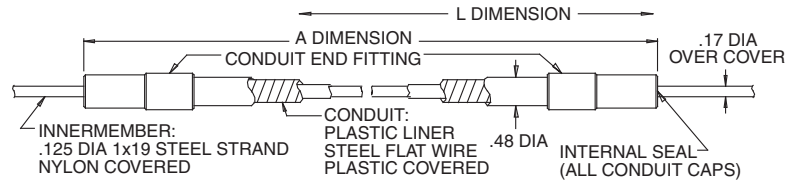
Other Related Products:

- Hand Control Brake
- Clutch

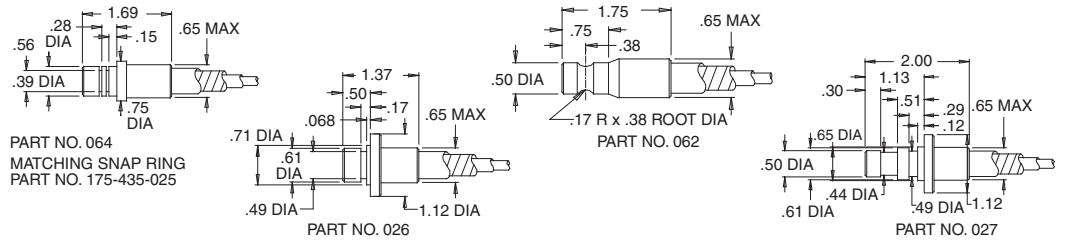
Pull-Only Brake

1500lb Series

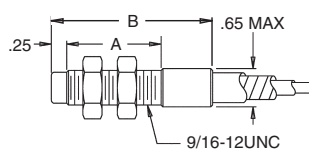
Ultimate Load: 1500lb
Minimum Bend Radius: 5"



Grooved End Fittings

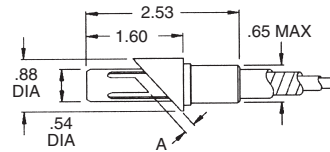


Threaded End Fittings



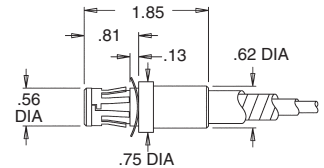
PART NO.	A	B
060	1.4	2.7
061	2.0	3.4

48° Clip-Lock End Fitting



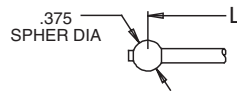
PART NO.	A	B
066	.13	.20
067	.20	.20

Clip-Lock End Fitting



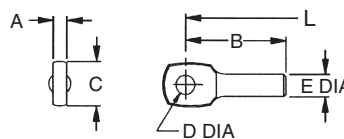
PART NO. 065

Ball End



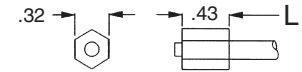
PART NO. BT 821
(2000LB MAX LOAD)

Eye End

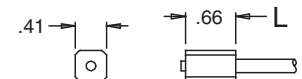


PART NO.	A	B	C	D	E
157-047-000	.235	1.81	.75	.323	.375
EE9158	.240	1.60	.75	.500	.437

Cable Stop



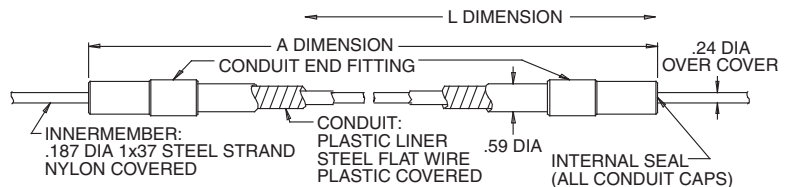
PART NO. BE 520
(2000LB MAX LOAD)



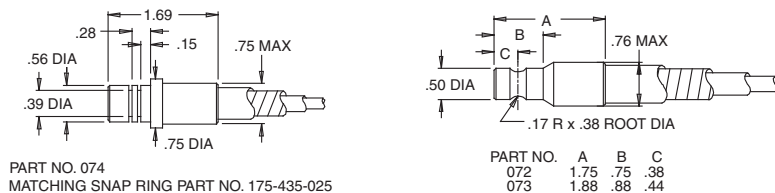
PART NO. BE 501

3000lb Series

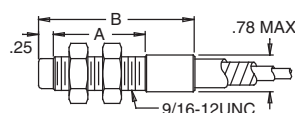
Ultimate Load: 3000lb
Minimum Bend Radius: 7"



Grooved End Fittings

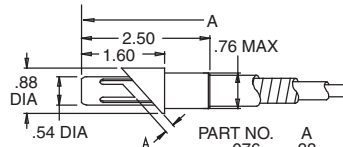


Threaded End Fittings



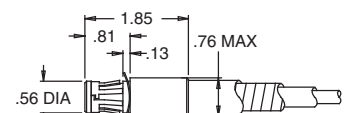
PART NO.	A	B
070	1.4	2.7
071	2.0	3.3

48° Clip-Lock End Fitting



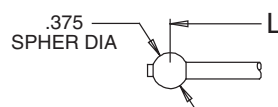
PART NO.	A	B
076	.33	.20
077	.20	.20

Clip-Lock End Fitting



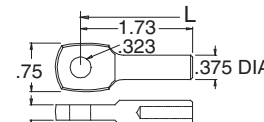
PART NO. 075
FOR .125 AND .187 THK MATERIAL

Ball End



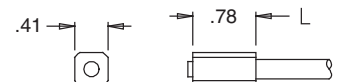
PART NO. BT 822
(2000LB MAX LOAD)

Eye End



.235 PART NO. 157-047-000

Cable Stop

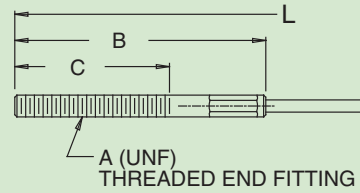


PART NO. BE 502

Pull-Only Brake Specifications

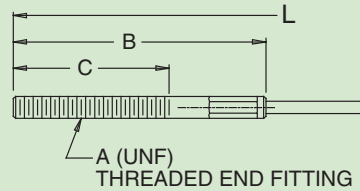
1500 Brake

Threaded End Fitting	A	B	C
TE504	5/16-24	3.70	2.22
TE504-006	5/16-24	2.08	.97
TE504-007	5/16-24	6.08	4.60
TE506	3/8-24	2.74	1.47
TE523-001	1/4-28	3.68	2.47



3000 Brake

Threaded End Fitting	A	B	C
TE505	3/8-24	2.95	2.00
TE505-1	3/8-24	1.88	1.00
TE508	3/8-24	2.62	1.50
TE509-1	3/8-24	4.95	3.75
TE510-1	5/16-24	2.50	1.50
TE510-2	5/16-24	3.62	2.24
TE510-4	5/16-24	4.00	3.00
TE510-5	1/4-28	3.62	2.50
TE510-6	5/16-24	2.12	1.00
TE510-7	5/16-24	2.88	1.50
TE510-8	5/16-24	5.60	4.47
TE510-9	5/16-24	3.00	1.91
TE605	3/8-24	6.00	5.00

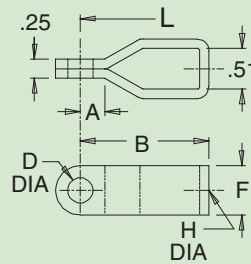
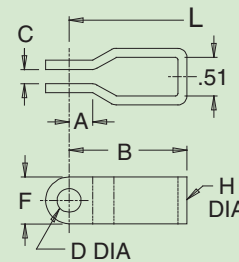
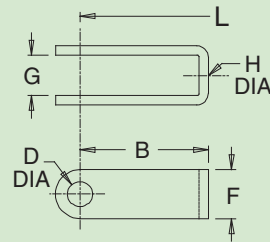


Strap Clevis Part Numbers (For both 1500 and 3000 brake)

Open Strap Clevis	A	B	D	F	G	H
CS540	-	1.62	.31	.62	.43	.266
CS540-1	-	1.62	.31	.62	.51	.266
CS540-6	-	2.50	.38	.75	.57	.386
CS540-7	-	2.50	.31	.62	.51	.266
CS541	-	1.94	.38	.75	.51	.266
CS541-3	-	1.94	.38	.75	.51	.323
CS541-5	-	2.00	.38	.75	.51	.266
CS541-7	-	2.50	.38	.75	.51	.266
CS541-8	-	2.50	.38	.75	.51	.323
CS542*	-	1.08	.50	1.00	.58	.323

Step Strap Clevis	A	B	C	D	F	H
CS550	.31	1.56	.19	.31	.62	.266
CS550-1	.31	1.56	.19	.38	.62	.266
CS550-2	.31	1.56	.19	.31	.62	.316
CS550-4	.31	1.56	.19	.25	.62	.266
CS551	.38	1.75	.25	.31	.62	.266
CS551-1	.38	1.75	.25	.38	.62	.266
CS551-2	.75	2.38	.25	.31	.62	.316
CS551-3	.38	1.50	.25	.25	.62	.266
CS552	.31	2.38	.25	.31	.75	.266
CS552-1	.31	2.38	.25	.38	.75	.266
CS552-3	.38	2.38	.25	.43	.75	.316
CS552-4	.38	2.38	.25	.31	.75	.316
CS553	.50	1.88	.19	.38	.75	.266

Closed Strap Clevis	A	B	C	D	F	H
CS562	.31	1.62	-	.31	.62	.316
CS563	.28	1.75	-	.31	.62	.316
CS564	1.00	2.38	-	.38	.75	.316



*use with 5/16 threaded end rod with nuts only

All line art dimensions are represented in inches

Pull-Only Brake Order Code

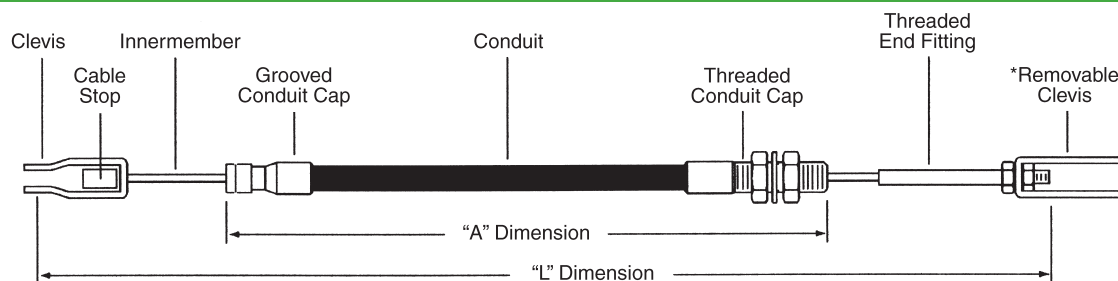
Material

- Carbon Steel and Plastic

Suggested End Fittings

- All 1500 & 3000lb Brake Cable Fittings
- Rod Ends
- Clevises

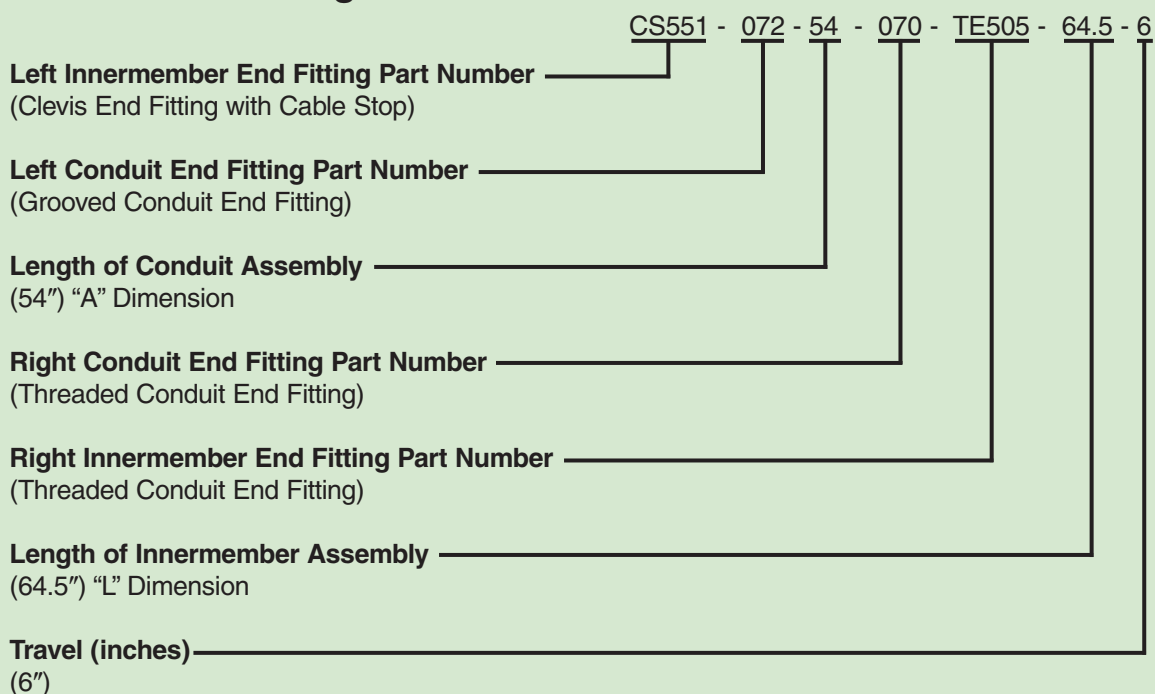
Industrial Pull-Only Brake



To specify a pull-only brake, the following information must be given in the order listed:

1. Left innermember end fitting part number.
 2. Left conduit end fitting part number.
 3. Length "A" between conduit fitting reference points in inches.
 4. Right conduit end fitting part number.
 5. Right innermember end fitting part number.
 6. Length "L" of innermember assembly between fitting reference points in inches.
 7. Travel of the innermember in the conduit in inches. (Note: dimensions "L" must be sufficiently greater than dimension "A" to allow desired travel).
- *Removable items should be listed separately.

Cablecraft® Ordering Codes



WARNING!

Since the manufacturer is unable to determine all applications in which a part may be placed, it is the user's responsibility to determine the suitability of the part for its intended use. This is especially true where safety is a factor. Incorrect application or installation may result in property damage, bodily injury, or death. For technical assistance, call 260-749-5105.

Cablecraft®
Cablecraft Motion Controls

2110 Summit Street
New Haven, Indiana USA 46774
Tel 260 749-5105 Fax 260 749-5677

4401 South Orchard Street
Tacoma, Washington 98411 USA
Tel 253 475-1080 Fax 253 474-1623

Diplocks Way-South Road
Hailsham, East Sussex BN27 3JF, England
Tel 44 1323 841510 Fax 44 1323 845848

www.cablecraft.com

Linking Motion
& Control...
The Cablecraft
Solution

